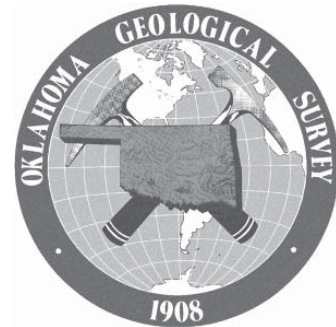


Unconventional Reservoirs Workshop

August 20, 2009

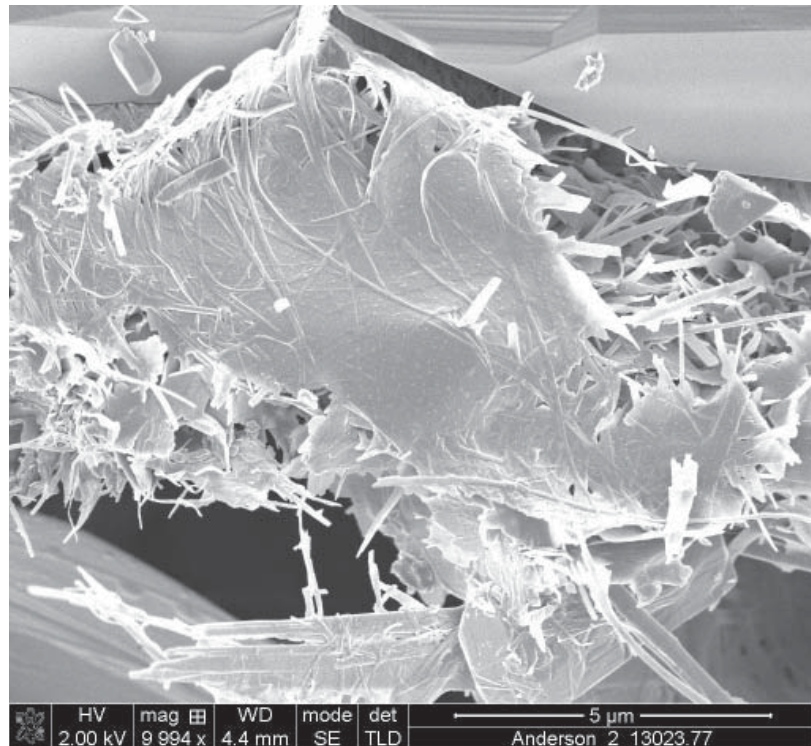
Moore Norman Technology Center; Norman, Oklahoma



Oklahoma Geological Survey
University of Oklahoma
Mewbourne College of Earth & Energy

Purpose and Scope of Meeting

This workshop, sponsored by the Oklahoma Geological Survey, will focus on exploitation of tight gas and shale gas reservoirs. Oklahoma possesses both in the Arkoma Basin and Woodford, Caney and Fayetteville shales. Geologic risk is of minimal concern in these plays. The challenges are to high grade the economically more attractive zones and to efficiently stimulate the productive intervals. Presentations will address these topics and cover local and Mid-Continent resource plays.



Of special interest are the quantitative characterization of petrophysical variability in these unconventional reservoirs and their relation to seismic attribute analysis to define sweet spots and the role of modern logging suites in helping to exploit these resources.

Contact Information

Technical Questions: Carl Sondergeld, Mewbourne College of Earth & Energy, 405/325-6870, csondergeld@ou.edu.

Registration and other information: Oklahoma Geological Survey 405/325-3031 or 800/330-3996; Michelle Summers 405/325-7313, mjsummers@ou.edu; Tammie Creel 405/325-3034, tcreel@ou.edu.